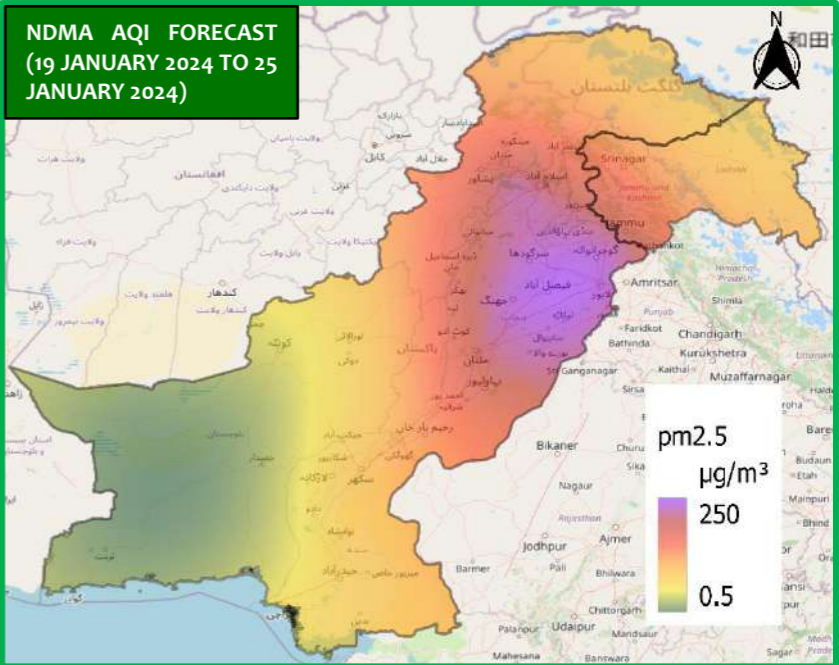
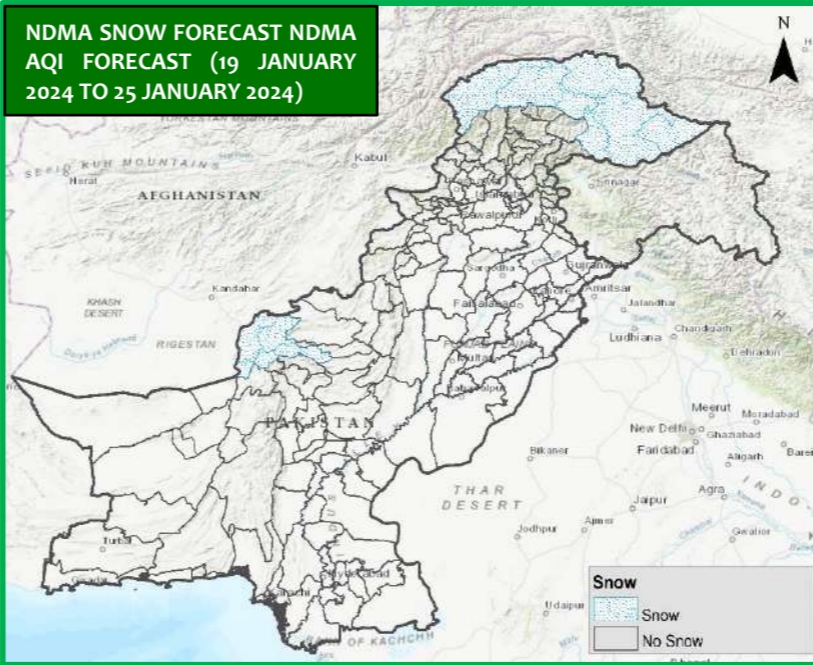
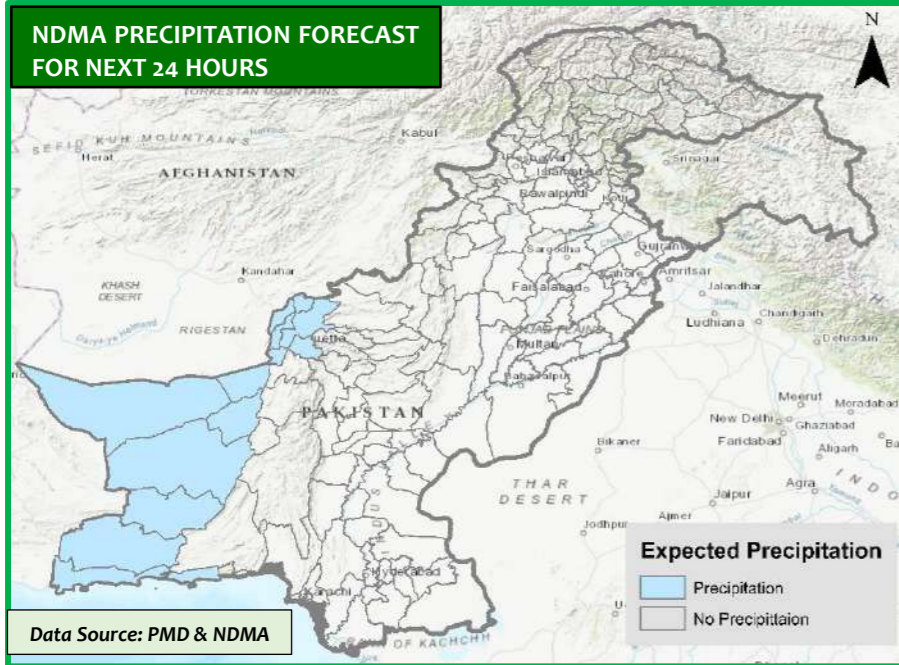
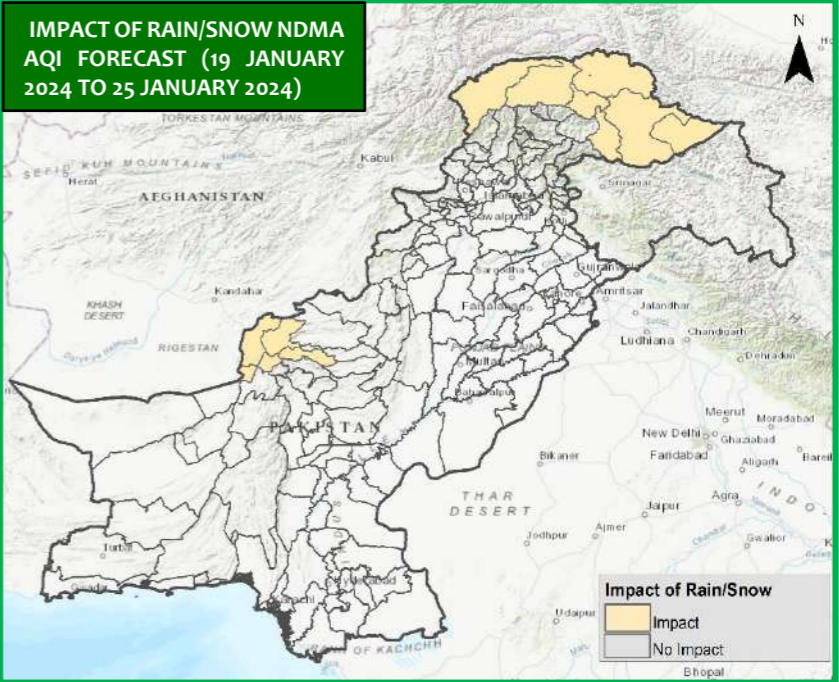
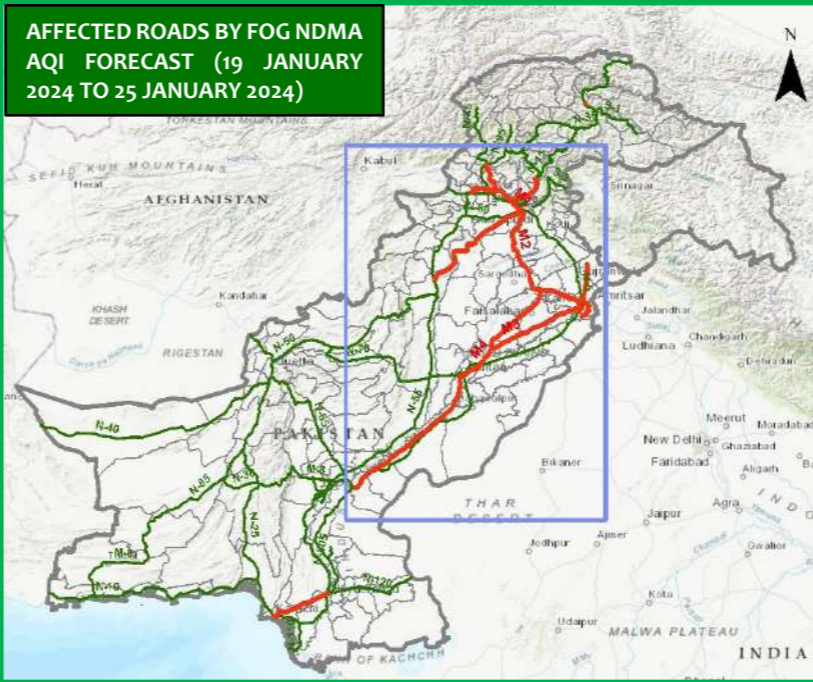




NDMA EXECUTIVE UPDATE – WINTER HAZARDS (19 JANUARY 2024 TO 25 JANUARY 2024)



- ### TOP RAIN / SNOW RECORDED LAST 24 HOURS (MM)
- Balochistan.** Yes
 - Khyber Pakhtunkhwa.** Nil
 - Punjab.** Nil
 - Sindh.** Nil
 - Gilgit-Baltistan.** Nil
 - State of AJ&K.** Nil
 - Islamabad Capital Territory.** Nil



FORECASTED IMPACTS

- No **adverse weather systems** expected during this week (19 JANUARY 2024 TO 25 JANUARY 2024)

WEATHER FOR COMING WEEK

- **Balochistan.** Rain is expected in western Balochistan, along with **snowfall** in the northern and north-western areas of the province.
- **Khyber Pakhtunkhwa.** Cold temperature conditions, along with **dense fog** during morning and night times, are likely to persist in all parts of the province.
- **Punjab.** Cold and dry weather, along with dense fog, will persist during morning and night times in various parts of the province.
- **Sindh.** Dry weather with **cool** nights and **foggy / misty** mornings are expected to prevail over the province.
- **Gilgit Baltistan.** Rain is expected in most parts of the province, along with **snow** in the high elevated areas.
- **State of AJ&K.** Cold weather with **precipitation (showers/snow)** is expected in most areas.
- **Islamabad Capital Territory.** Cold and dry weather is likely to persist in the city.

GUIDANCE ISSUED

- PDMA to undertake **regular public awareness on all media channels / social media** to maximise general public’s **knowledge on risks associated with winter season**; colder temperatures, freezing rain, snowfall, fog, smog, etc.
- NHA / FWO / Local C&W Depts to **ensure pre-placement of machinery and timely clearance of snowfall from roads / highways.**
- Rescue Services, Armed Forces and leading NGOs / CSOs to **ensure availability of personnel / equipment** in the indicated areas & **be on stand-by for rapid response** in case of any forecasted adverse weather systems.

WEATHER OUTLOOK – TOURIST LOCATIONS – NEXT 7 DAYS		
Locations	Isolated Thunderstorm/Rain / Snowfall	Temperature (°C)
Murree	No Snow	-1 to 8
Galiyat	No Snow	-2 to 7
Naran	No Snow	-9 to 2
Kaghan	No Snow	-7 to 4
Malamjabba	No Snow	-1 to 9
Kalam	No Snow	-2 to 12
Neelum	No Snow	-1 to 7
Naltar	Light Snow	-9 to 1
Rattu	Light Snow	-5 to 1
Skardu	Light Snow	-10 to 1

LOW VISIBILITY ADVISORY
DRIVE CAUTIOUSLY ON ROADS (M1, M2, M3, M4, M5, M11 AND M14) AND LINK ROADS AFFECTED BY DENSE FOG. MAINTAIN A SAFE FOLLOWING DISTANCE AND REDUCE SPEED TO ADAPT TO LIMITED VISIBILITY.
AVOID HIGH BEAMS BECAUSE THEY CAN REFLECT OFF FOG PARTICLES, WORSENING VISIBILITY. STICK TO LOW BEAMS INSTEAD. USE FOG LIGHTS TO IMPROVE VISIBILITY CLOSE TO THE GROUND.
STAY TUNED TO WEATHER UPDATES AND BE AWARE OF ANY CHANGES IN VISIBILITY CONDITIONS DURING YOUR JOURNEY.

TOURIST ADVISORY
TOURISTS VISITING AREAS SUSCEPTIBLE TO SNOW ARE ADVISED TO REMAIN VIGILANT AS LIGHT SNOW IS EXPECTED IN DIFFERENT PARTS OF THE COUNTRY.
TOURISTS VISITING AREAS OF GILGIT-BALTISTAN ARE HIGHLY ADVISED TO REMAIN ALERT, AS LIGHT TO MODERATE SNOW, IS EXPECTED IN THE COMING DAYS.
WHILE LIGHT PRECIPITATION IS EXPECTED IN THE COMING DAYS IN AJ&K, TOURISTS VISITING KASHMIR, ESPECIALLY NEELUM VALLEY, SHOULD BE PREPARED FOR CHILLY TEMPERATURES, PARTICULARLY DURING THE EVENINGS AND EARLY MORNINGS.